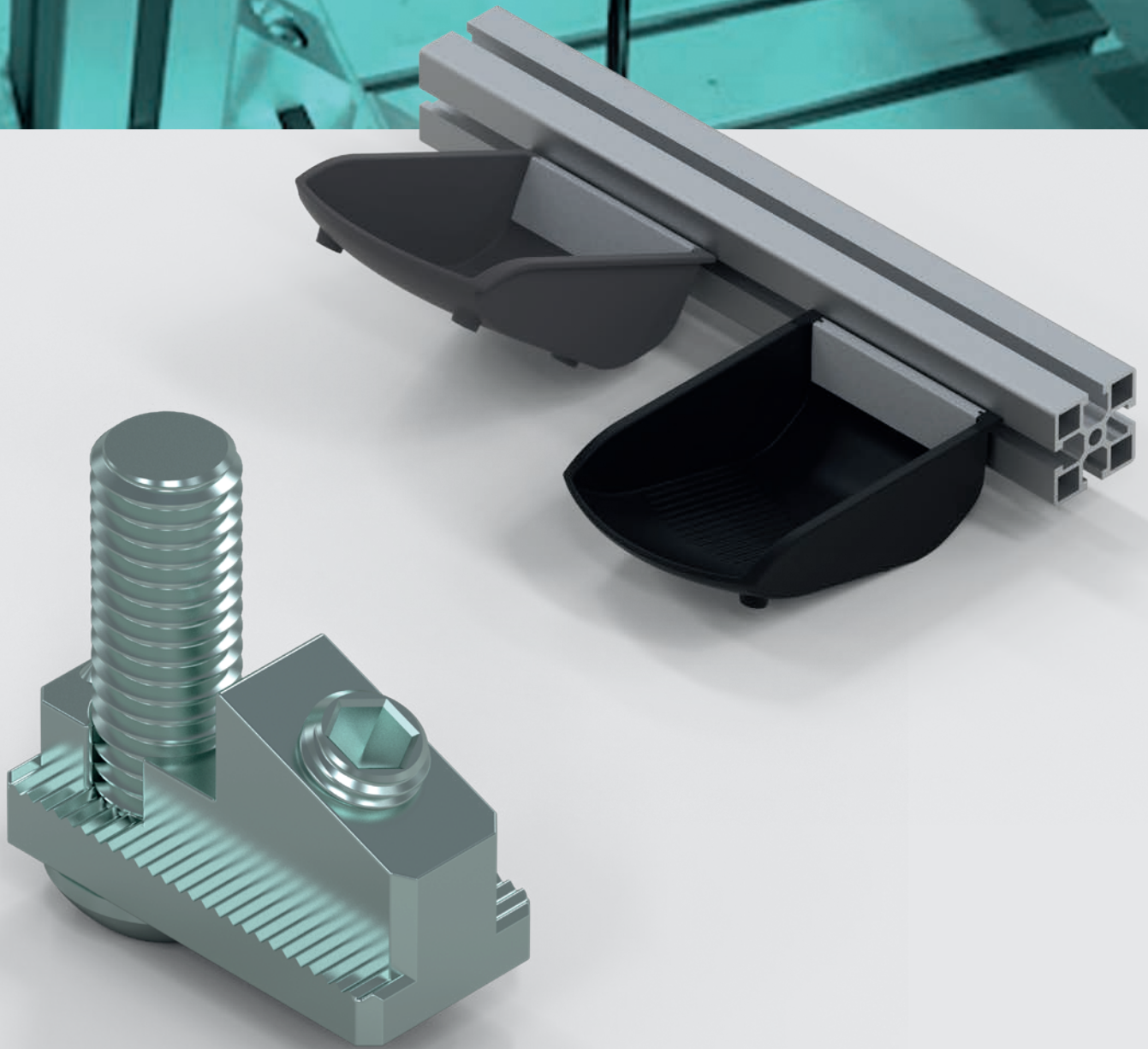
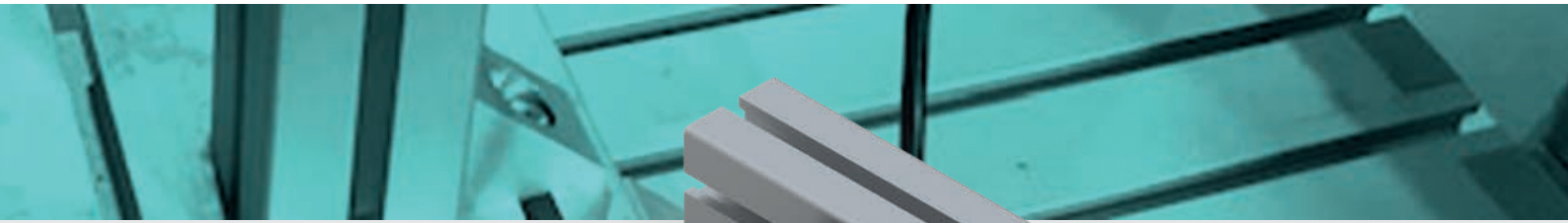


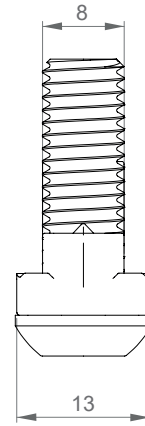
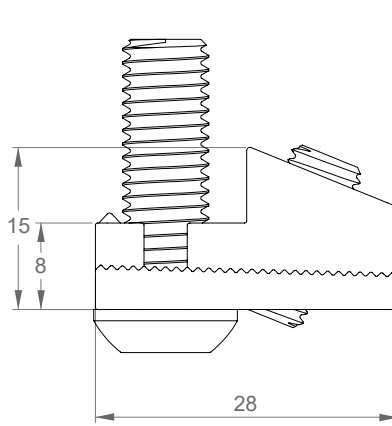
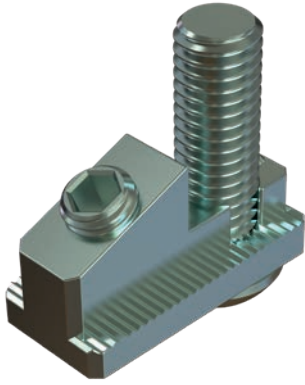
[www.lmisolutions.co.uk](http://www.lmisolutions.co.uk)

ACCESSORIES

**NEW**



# Anti-rotation adjustable coupling

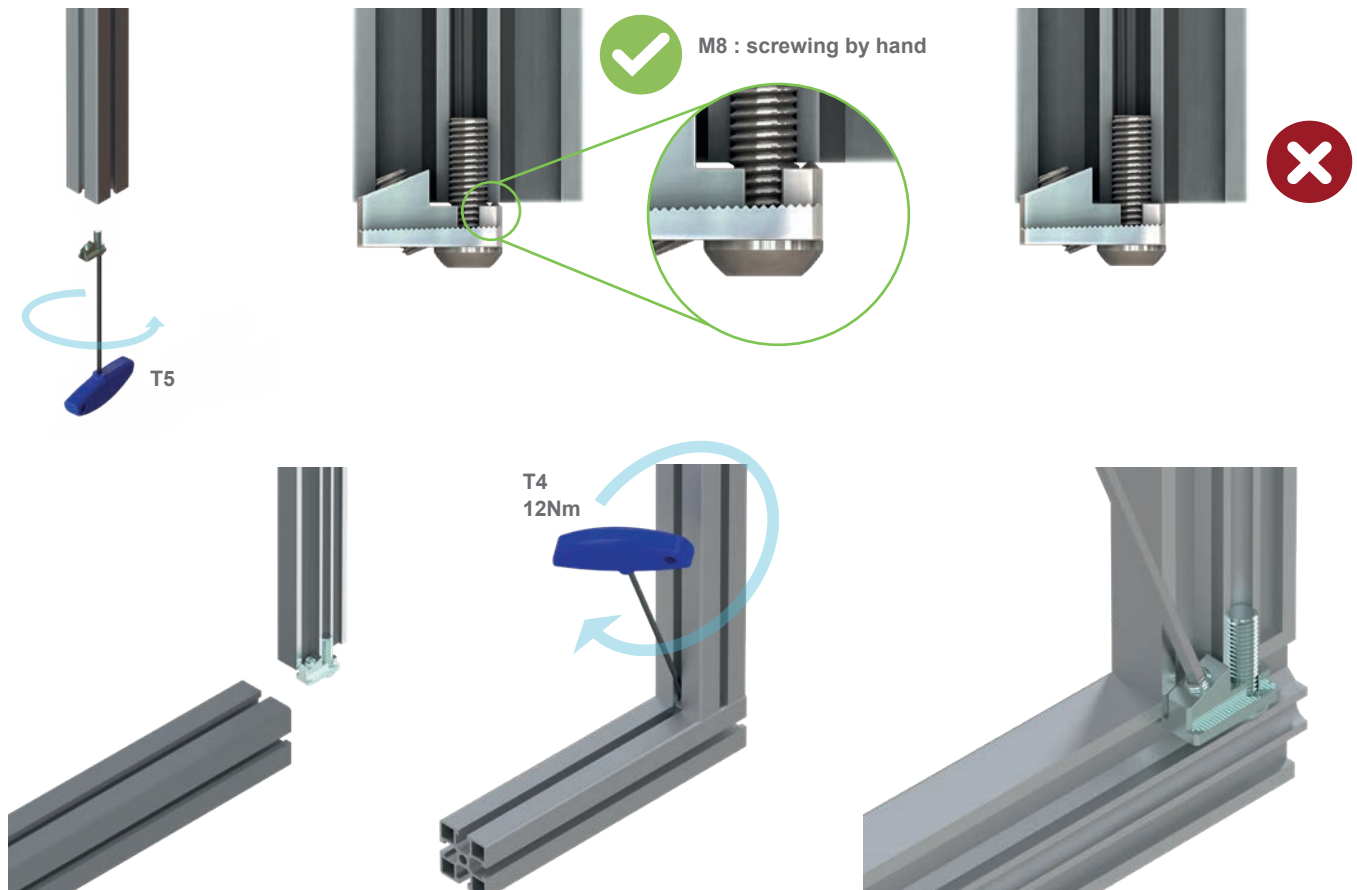


## SPECIFICATIONS

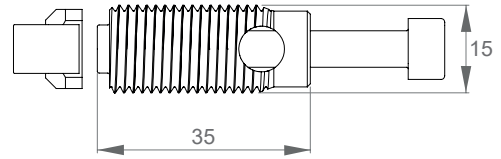
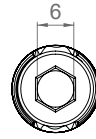
Reference	Anti-rotation adjustable coupling	ACC-N119900
Description	<p>Allows for the perpendicular assembly of a profile on the slot of another NORCAN profile.</p> <ul style="list-style-type: none"> <li>- easy implementation (one M8 tapping at the end of the profile)</li> <li>- for the assembly of profiles that need to be adjustable</li> <li>- for the assembly of profiles where it is not possible to use a single central screw, for instance cross connections</li> <li>- ensures electrical continuity <math>\oplus</math></li> </ul>	
Material	Zinc-plated cast steel	

## COMPONENTS

1x Body in zinc-plated cast steel	
1x M8x20 zinc-plated round socket head screw	
1x M7x16 zinc-plated headless socket screw	



# Machining-free coupling



## SPECIFICATIONS

Reference Machining-free coupling

**ACC-N119800**

Description

- Allows for the perpendicular assembly of two NORCAN profiles by their slots.
- easy implementation (does not require any machining of profiles/ is not suited for heavy profiles)
- for the assembly of profiles that need to stay adjustable
- for the assembly of profiles where it is not possible to use a single central screw, for instance cross connections

Material Zinc-plated steel

## COMPONENTS

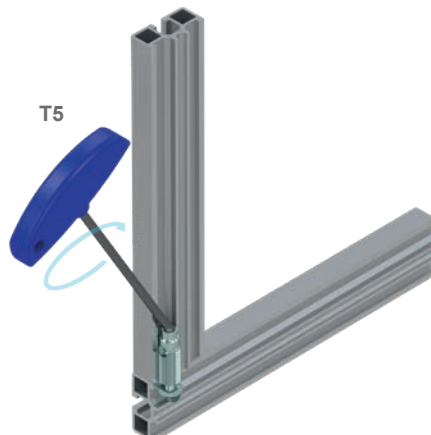
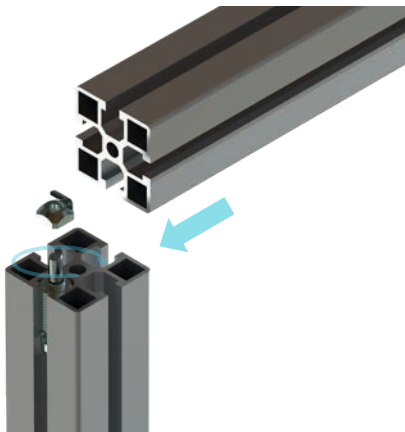
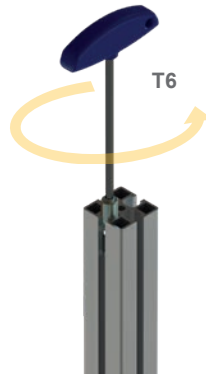
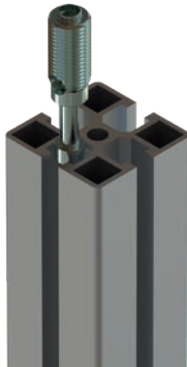
1x Body in zinc-plated cast steel



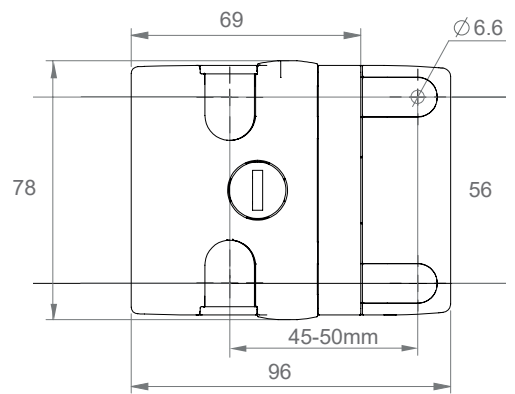
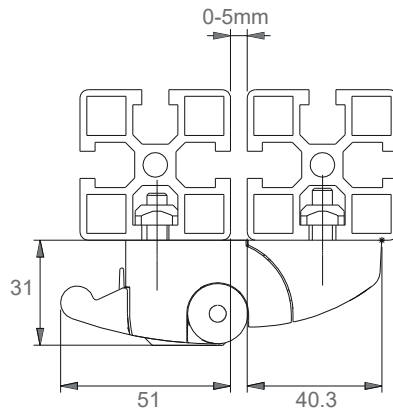
1x M6x45 zinc-plated socket head screw



1x M6 zinc-plated spring nut



## Latch with handle and key



### SPECIFICATIONS

Reference Latch with handle and key

**ACC-N143500**

Description For sliding doors or swinging doors where the outer side is aligned with the structure of the frame

Material Black coated cast aluminium

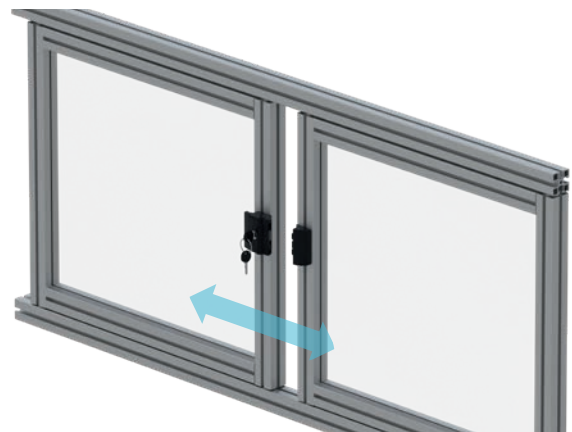
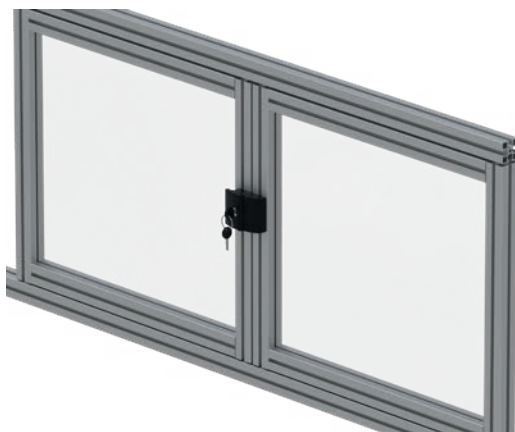
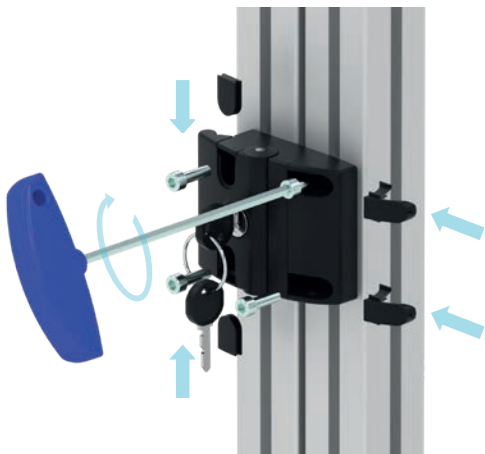
### COMPONENTS

1x Latch with handle

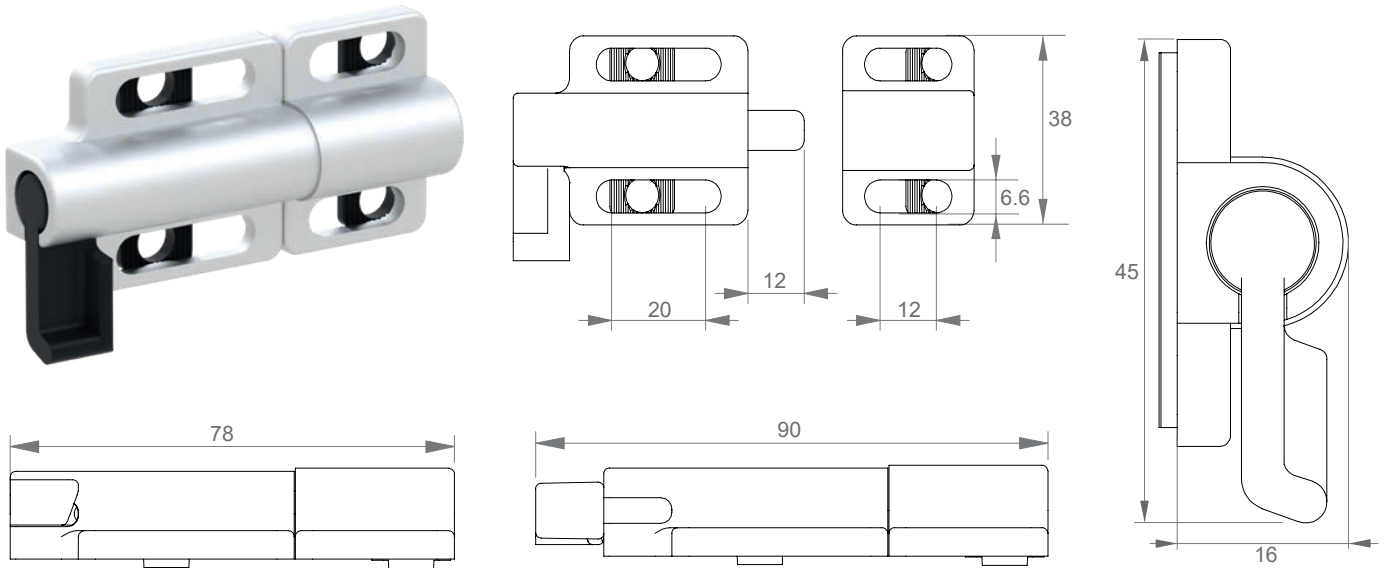
4x M6x20 zinc-plated socket head screw

4x M6 zinc-plated 13x13 nut

2x Key



## Door latch with manual locking



### SPECIFICATIONS

Reference Door latch with manual locking

**ACC-N142400**

Description For sliding doors or swinging doors where the outer side is aligned with the structure of the frame

Material Zinc die-cast support, stainless steel axle, black plastic PA

### COMPONENTS

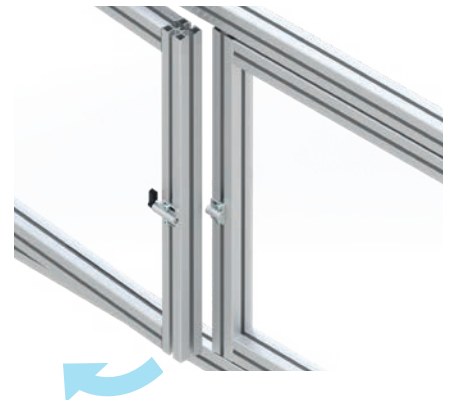
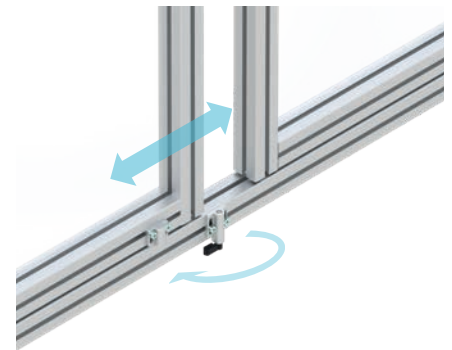
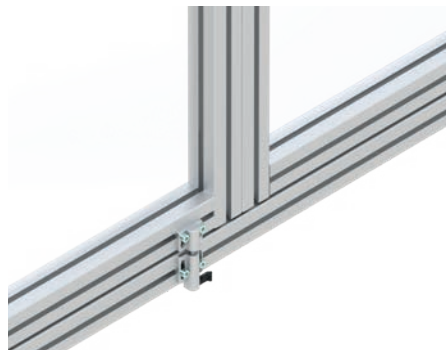
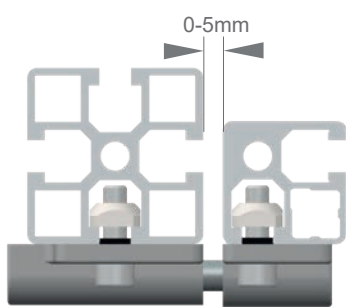
1x Door latch + slot fixation strips



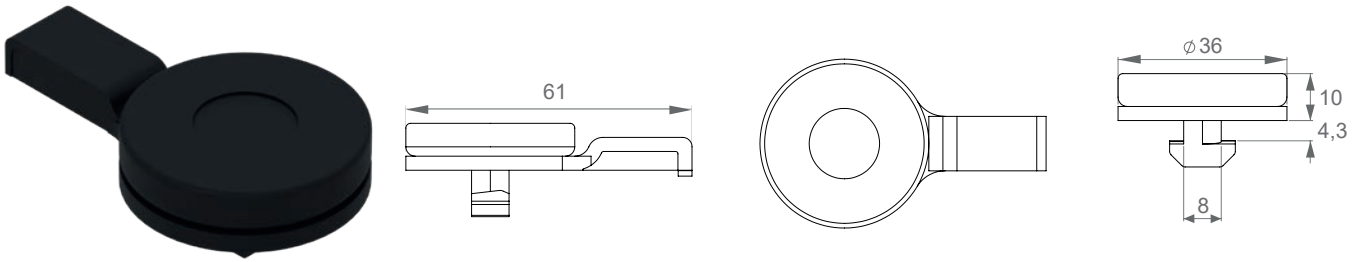
4x M6x20 zinc-plated socket head screw



4x M6 zinc-plated 13x13 nut



## Foot quarter turn/stop



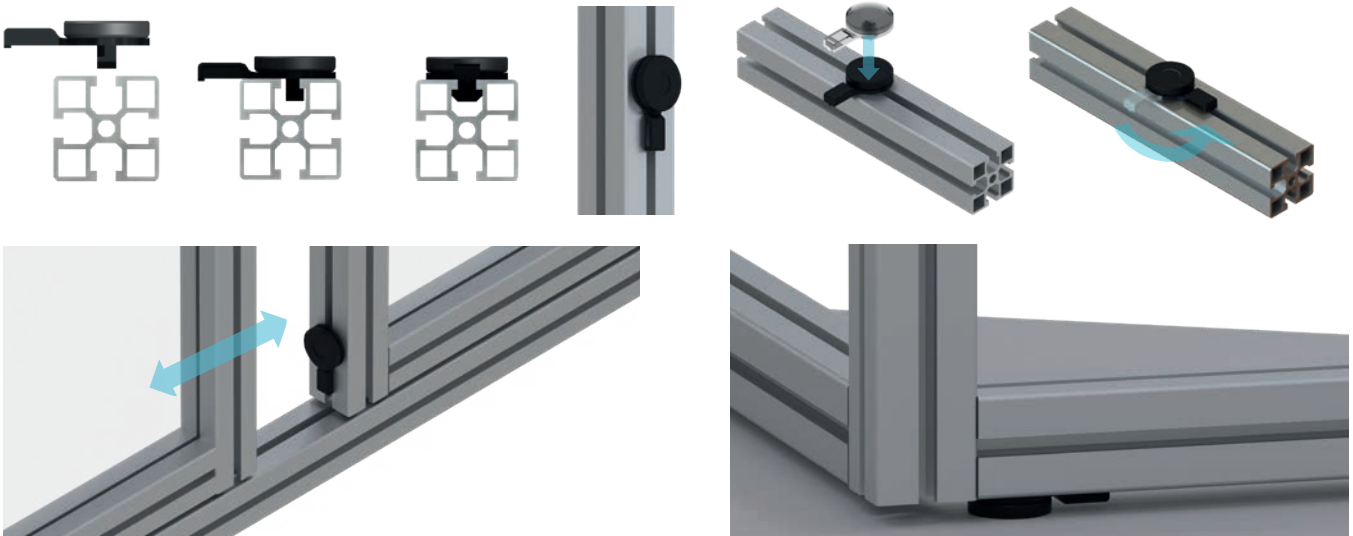
### SPECIFICATIONS

Reference Foot quarter turn/stop

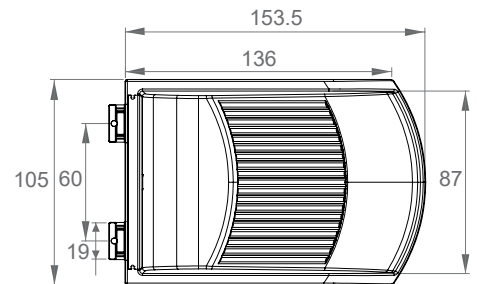
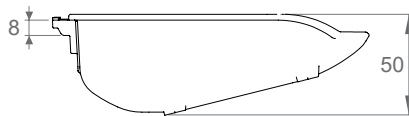
**ACC-N124500**

Description Has to be mounted in a slot. The assembly and disassembly are performed without using any tools


Material Plastic PA reinforced with an elastomer pad (TPE 70 Shore A). Anti -vibration and anti-slip



## Parts tray



### SPECIFICATIONS

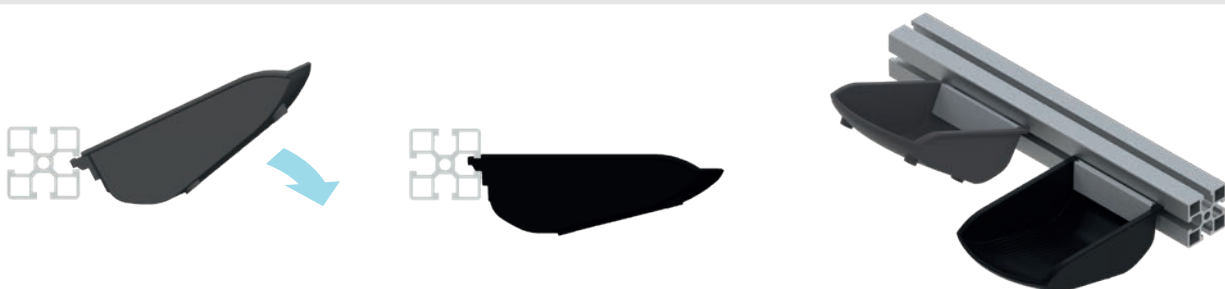
References Parts tray (grey RAL7042)  
Parts tray ESD (black) 

**ACC-N164100**

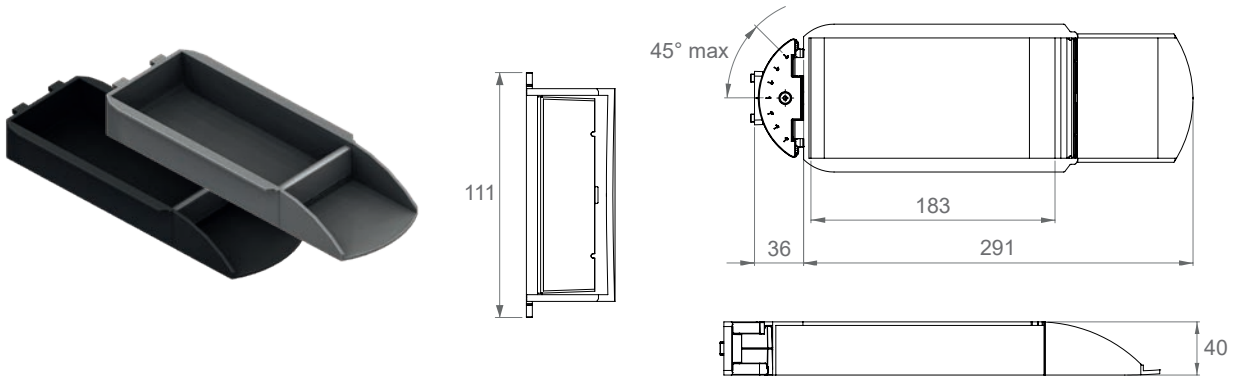
**ACC-N164600**

Description Has to be mounted in a slot or laid down on its 4 anti-slip pads. Including a label-holder (88 x 22 mm)

Material Reinforced plastic PA



# Parts tray with storage

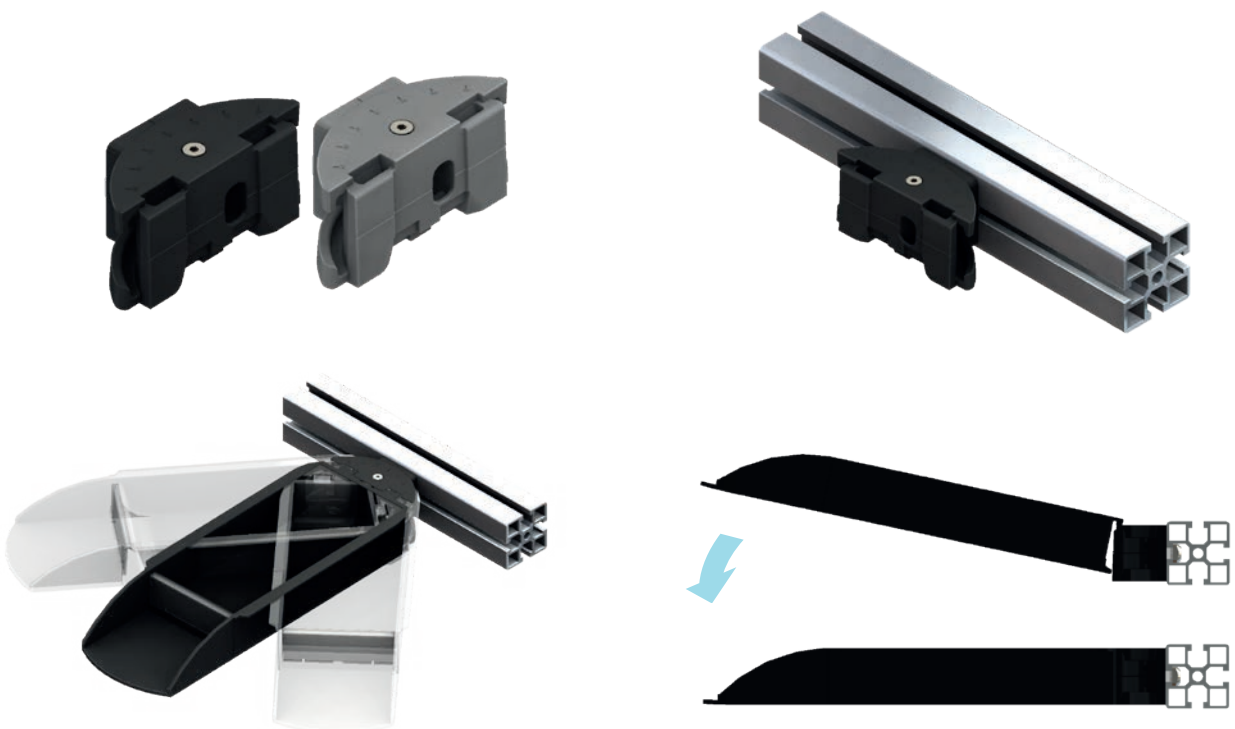


## SPECIFICATIONS

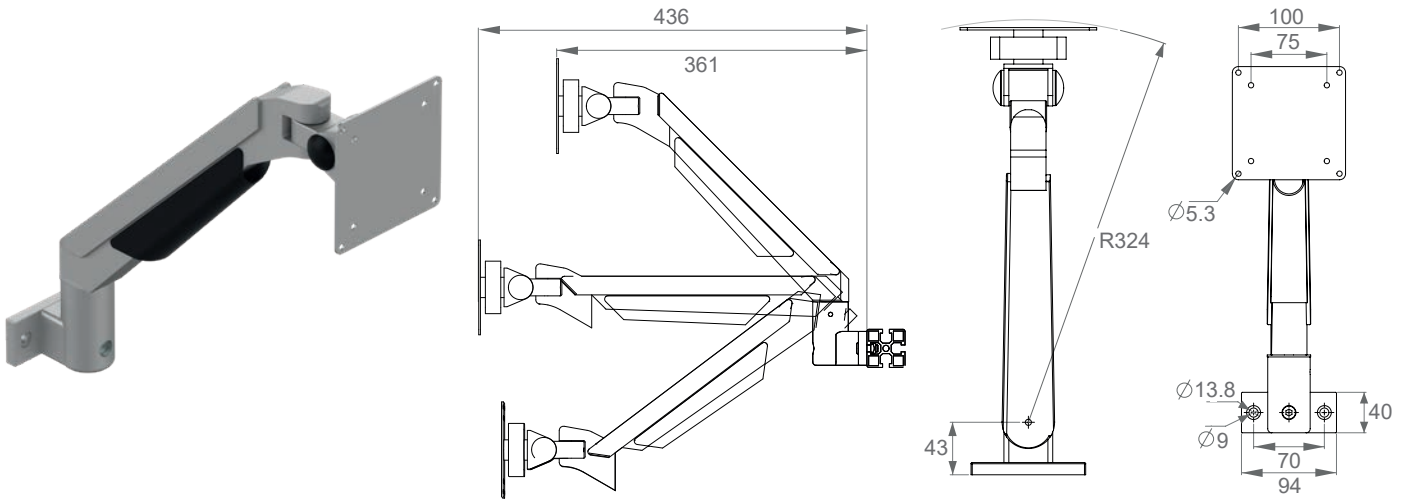
References	Rotating/swivel parts tray with storage (grey RAL7042)	<b>ACC-N164200</b> <sup>(1)</sup>
	<ul style="list-style-type: none"> <li>└ Parts tray with storage (grey RAL7042)</li> <li>└ Pivot for parts tray with storage (grey RAL7042)</li> </ul>	<b>ACC-N264200</b> <sup>(2)</sup> <b>ACC-N164500</b> <sup>(3)</sup>
References	Rotating/swivel parts tray with storage ESD (black)	<b>ACC-N164800</b> <sup>(4)</sup>
	<ul style="list-style-type: none"> <li>└ Parts tray with storage ESD (black)</li> <li>└ Pivot for parts tray with storage ESD (black)</li> </ul>	<b>ACC-N264800</b> <sup>(5)</sup> <b>ACC-N164900</b> <sup>(6)</sup>
Description	Has to be mounted in a horizontal slot. Including a label-holder (88 x 22 mm). Amplitude from -45° to 45°, adjustable with a clamping screw	
Material	Reinforced plastic PA	

## COMPONENTS

	(1)	(2)	(3)				
1x Parts tray with storage	●	●		●	●		
1x Pivot for parts tray with storage	●		●	●		●	
1x M8x20 zinc-plated low socket head screw	●		●	●		●	
1x Zinc-plated 13x13 nut	●		●	●		●	



# Articulated monitor holder/arm 4-axis

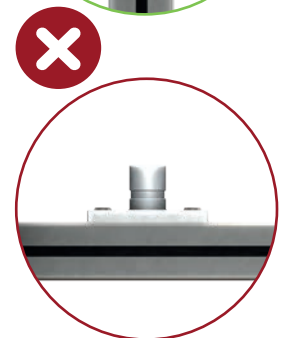
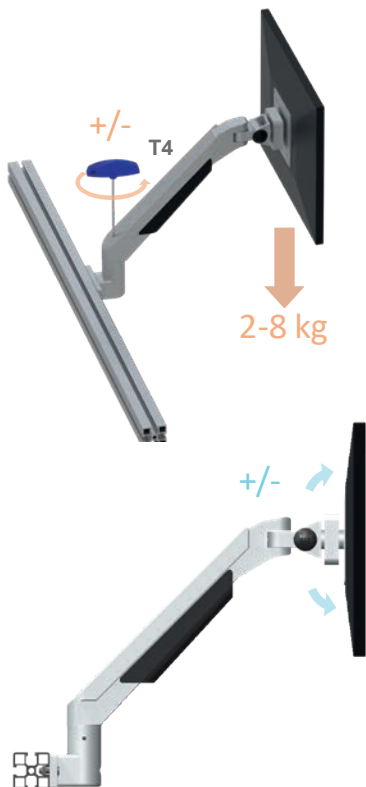


## SPECIFICATIONS

Reference	Articulated monitor holder/arm 4-axis	<b>ACC-N186100</b>
Description	Mounting system for monitors with a standard VESA connection (75-100) Load balancing by a gas cylinder from 2 to 8 kg	
Material	Coated cast aluminum, black plastic, steel	

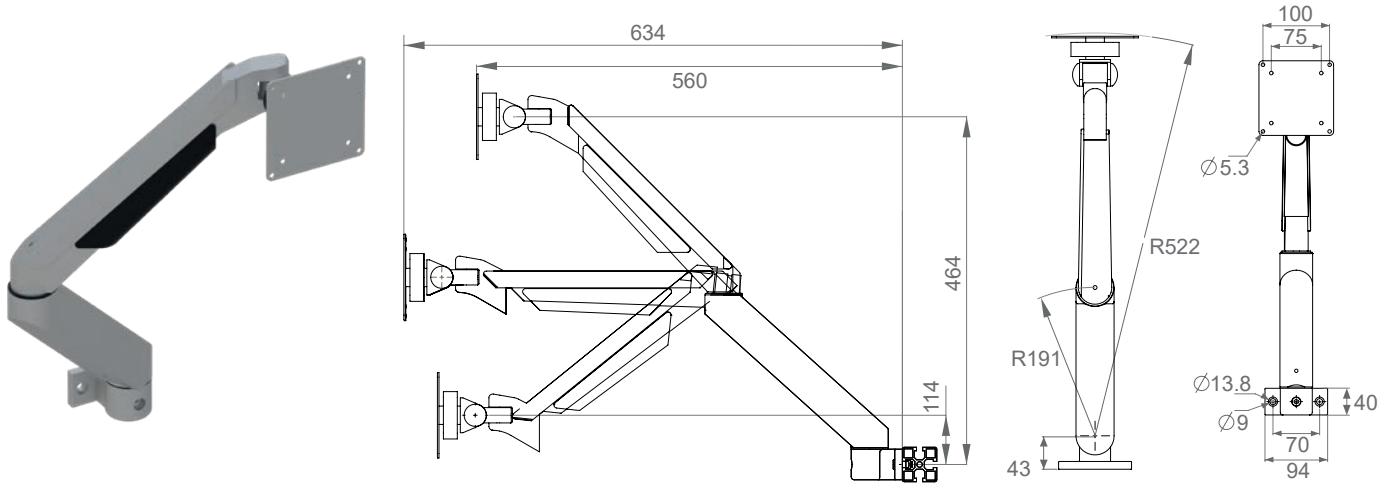
## COMPONENTS

1x Articulated monitor holder/arm 4-axis	
2x M8x20 zinc-plated low socket head screw	
2x M8 zinc-plated 13x13 nut	
4x M5x16 zinc-plated round socket head screw	
4x M4x16 zinc-plated round socket head screw	
4x M5 zinc-plated washer	





# Articulated monitor holder/arm 5-axis

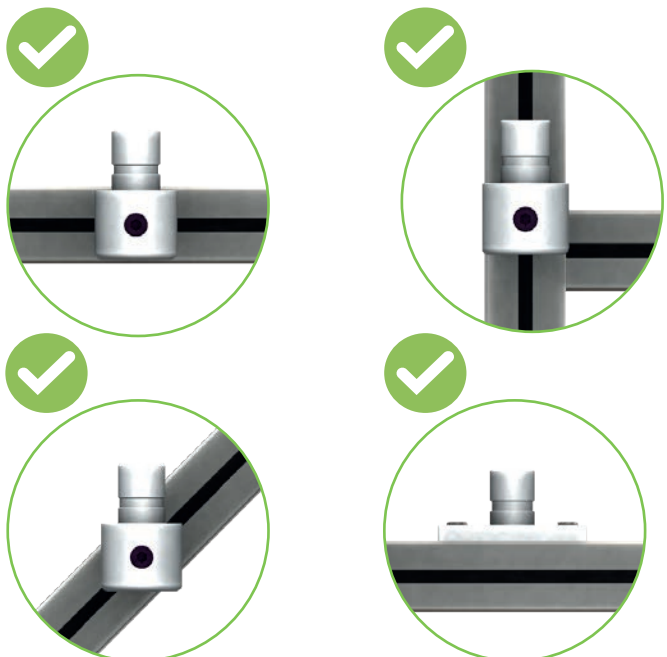
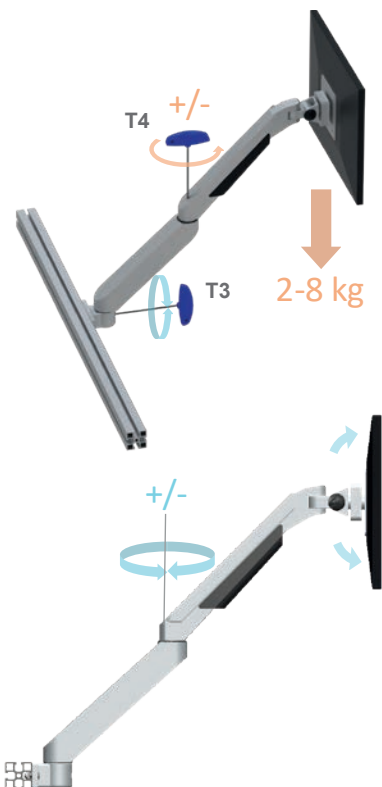


## SPECIFICATIONS

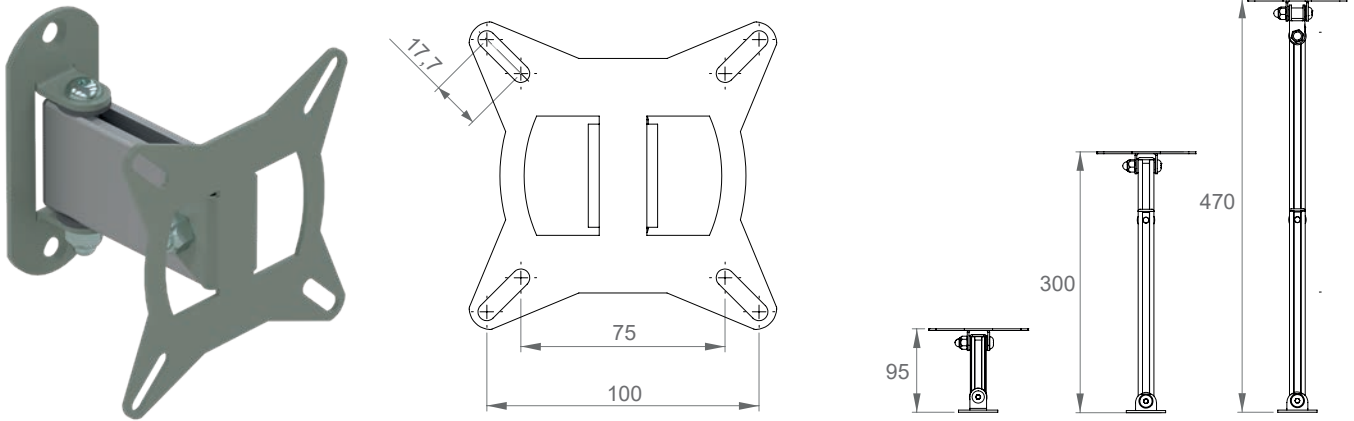
Reference	Articulated monitor holder/arm 5-axis	<b>ACC-N186200</b>
Description	Mounting system for monitors with a standard VESA connection (75-100) Load balancing by a gas cylinder from 2 to 8 kg	
Material	Coated cast aluminum, black plastic, steel	

## COMPONENTS

1x Articulated monitor support 5-axis	
2x M8x20 zinc-plated low socket head screw	
2x M8 zinc-plated 13x13 nut	
4x M5x16 zinc-plated round socket head screw	
4x M4x16 zinc-plated round socket head screw	
4x M5 zinc-plated washer	



# Adjustable arm for flat screens

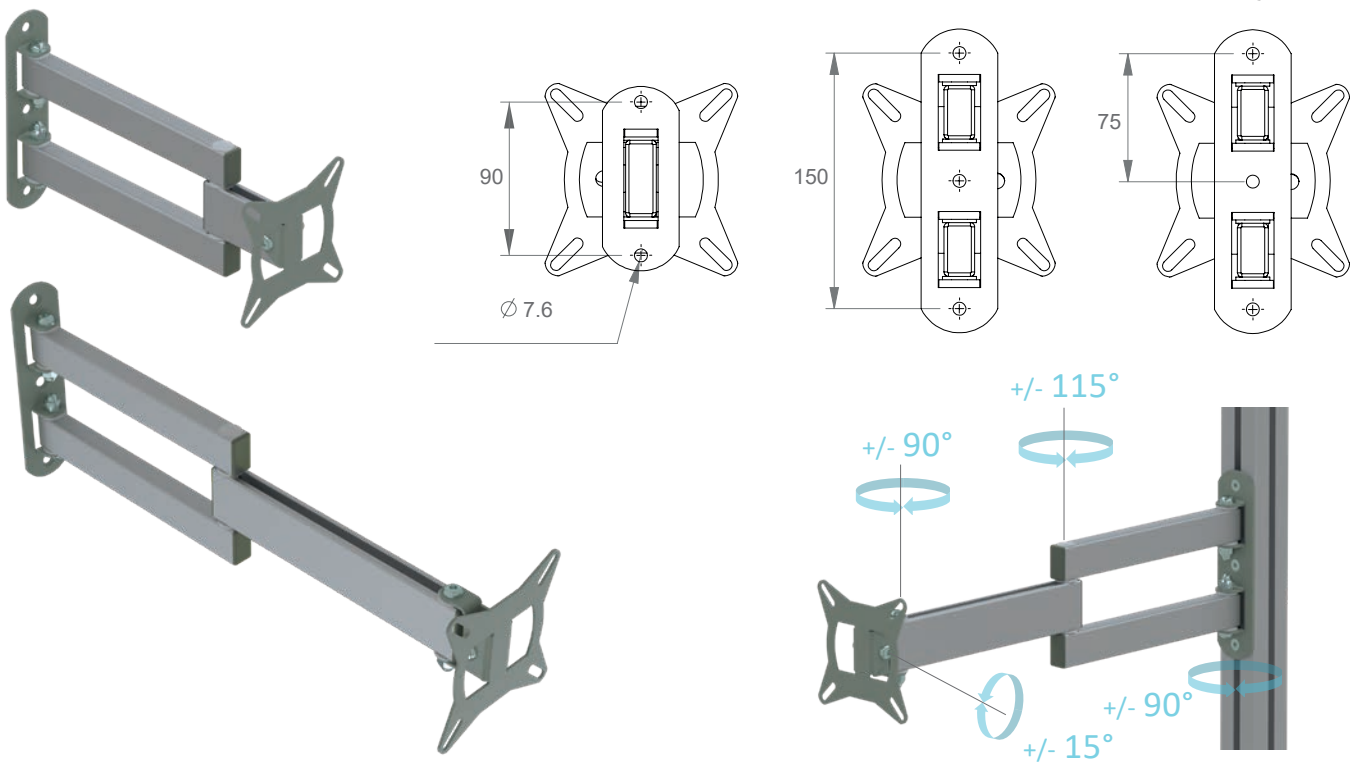


## SPECIFICATIONS

References	Adjustable arm for flat screens L = 95mm (2 axis) Adjustable arm for flat screens L = 300mm (3 axis) Adjustable arm for flat screens L = 470mm (3 axis)	<b>ACC-N186600</b> <b>ACC-N186700</b> <b>ACC-N186800</b>
Description	- Mounting system for monitors with a standard VESA connection (75-100) - Maximum load : 15kg	
Material	Aluminium profile, coated steel	

## COMPONENTS

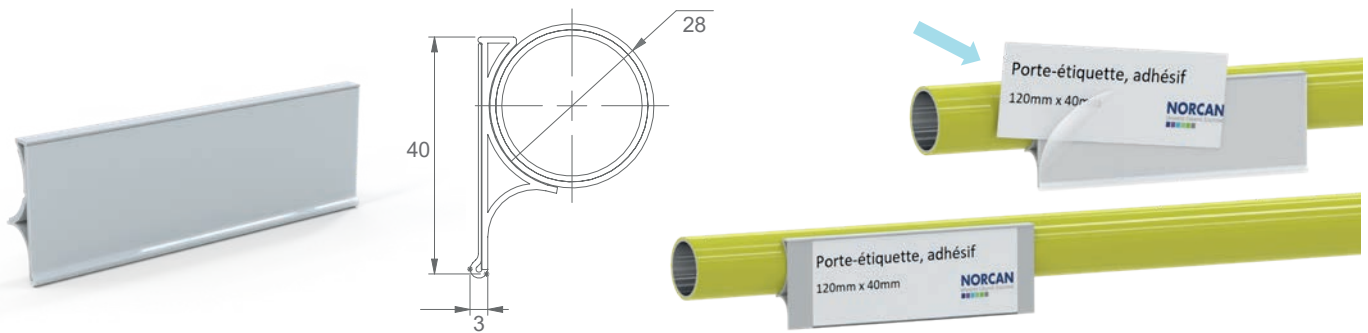
1x Adjustable arm for flat screens	
2x M6x16 Zinc-plated countersunk screw	
2x M6 Zinc-plated spring nut	
4x M5x16 Zinc-plated round socket head screw	
4x M4x16 Zinc-plated round socket head screw	
4x M5 Zinc-plated washer	



## Adhesive label holder

### SPECIFICATIONS

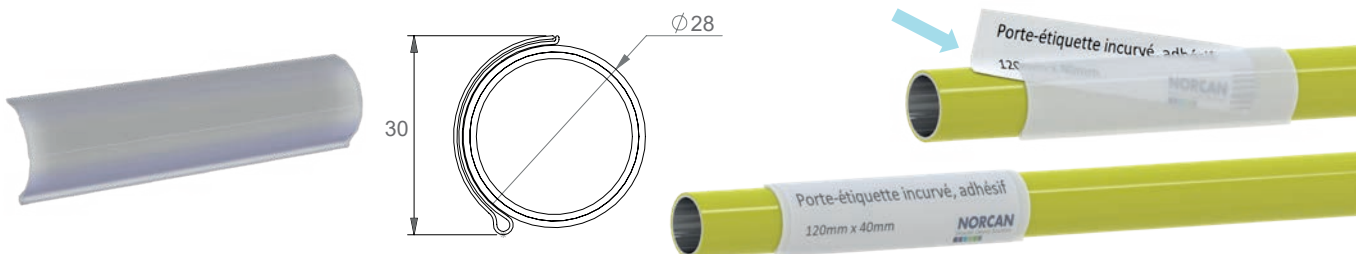
References	Adhesive label holder, 120mm x 40mm Adhesive label holder 2000mm x 40mm	<b>ACC-F139000</b> <b>PRO-F039000</b>
Description	For steel pipes of diameter 28mm For labels of 120mm x 38mm	
Material	Hard PVC plastic	



## Curved adhesive label holder

### SPECIFICATIONS

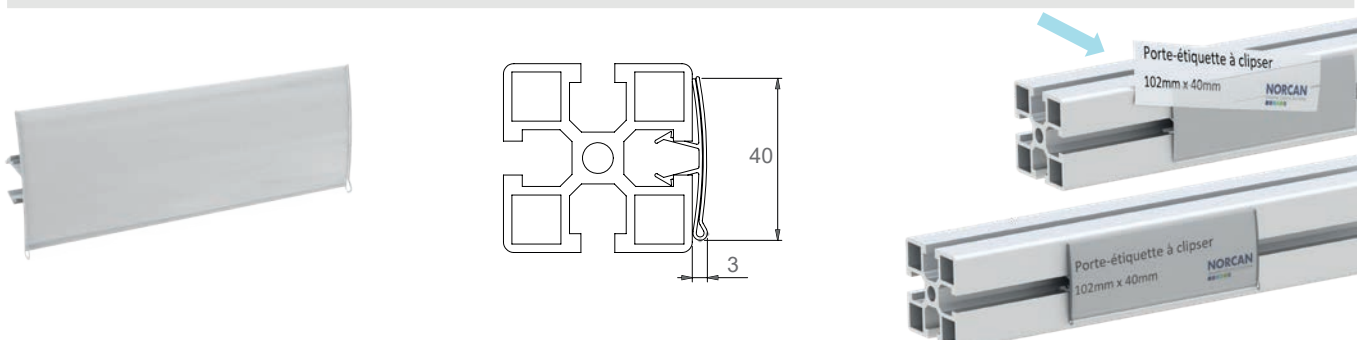
References	Curved adhesive label holder, 120mm x 40mm Curved adhesive label holder, 2000mm x 40mm	<b>ACC-F139200</b> <b>PRO-F039200</b>
Description	For steel pipes of diameter 28mm For labels of 120mm x 38mm	
Material	Hard PVC plastic	



## Label clip

### SPECIFICATIONS

References	Label clip, 102mm x 40mm Label clip, 2000mm x 40mm	<b>ACC-N139000</b> <b>PRO-N039000</b>
Description	To clip in the slot of Norcan profiles For labels of 102mm x 38mm	
Material	Hard PVC plastic	




# LED light IP65

## SPECIFICATIONS

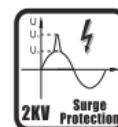
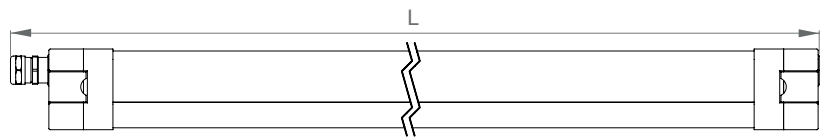
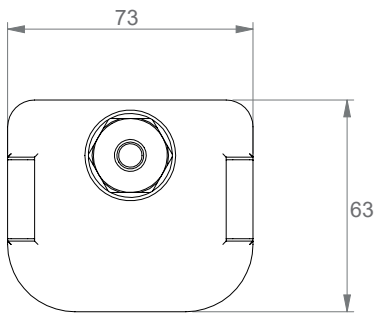
LED light IP65							
Power	CRI / RA	Scattering angle	Voltage	Color	Luminous flux	Measurements L x l x h	
20W	>80	160°	220-240V	5000K	2000 lumens	659x74x64 mm	<b>ACC-0042500</b>
40W	>80	160°	220-240V	5000K	4000 lumens	1221x74x64 mm	<b>ACC-0042700</b>
60W	>80	160°	220-240V	5000K	6000 lumens	1502x74x64 mm	<b>ACC-0042900</b>

Frame in white ABS, light scatterer in translucent polycarbonate

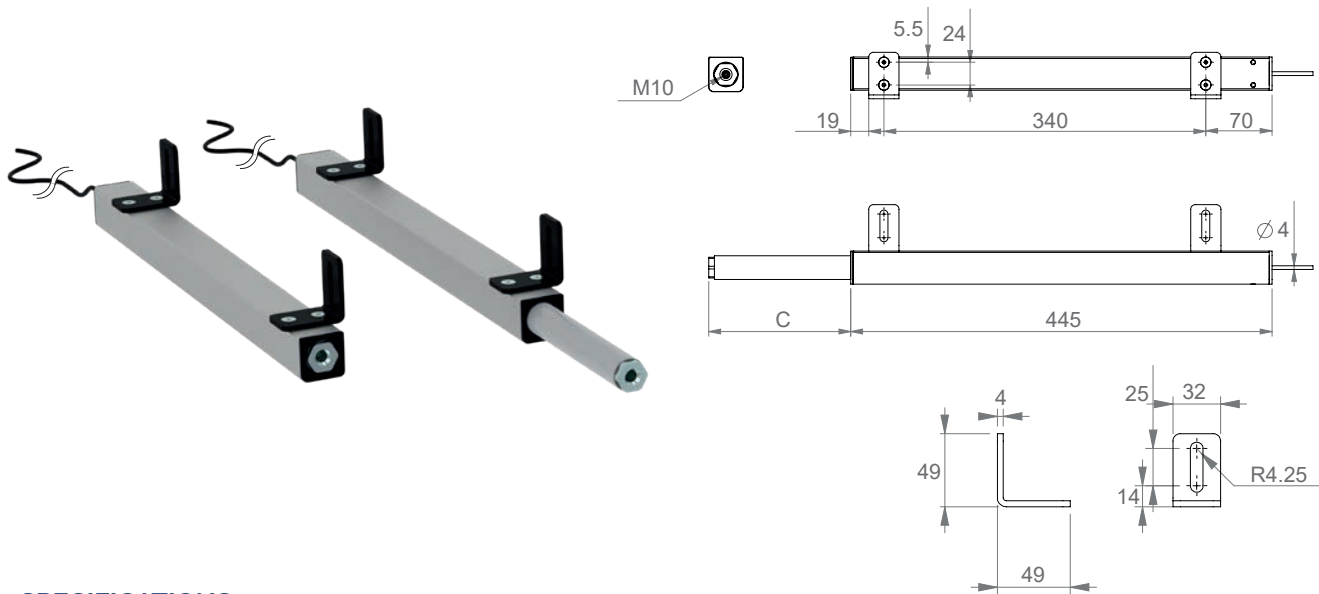
## COMPONENTS

1x LED light	
2x Mounting clip	
2x Cable gland	
2x M5x16 zinc-plated round socket head screw	
2x M5 zinc-plated spring nut	

*(Dimmable version on demand)*



# Hydraulic linear unit



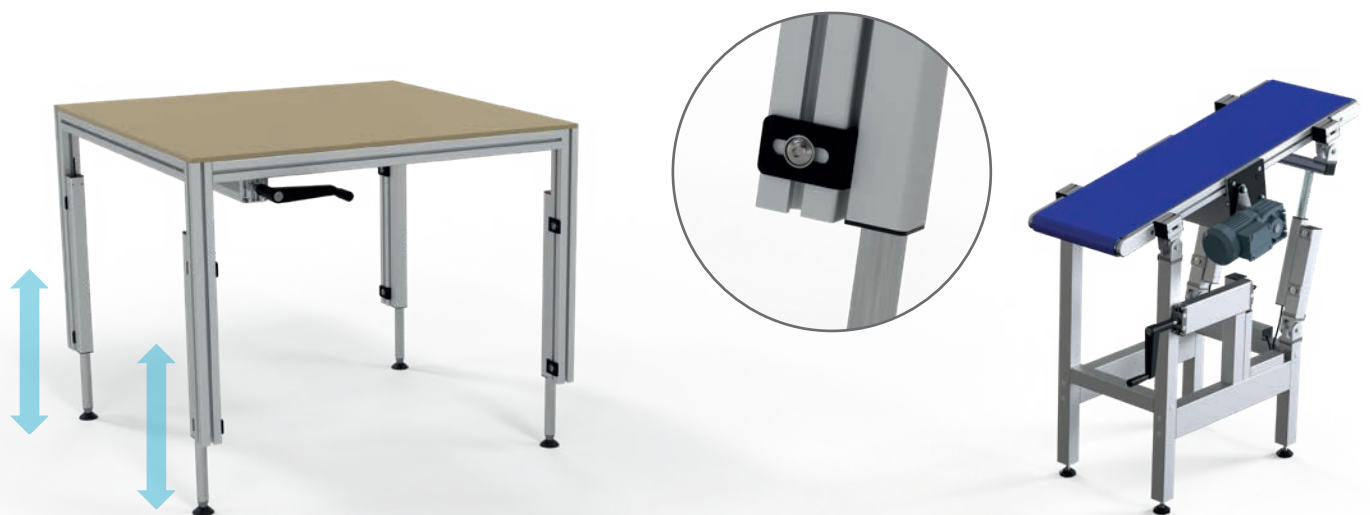
## SPECIFICATIONS

Reference	Hydraulic linear unit	<b>ACC-N107700</b>
Description	<p>Maximum load per unit : 1500N (x4 = 6000N)                  Cylinder stroke : 300mm (280mm with a motorized pump)                  Hydraulic hose's length : 4000mm                  M10 tapping at the end                  Hydraulic hose pre-filled with oil                  Warning : not suited for frequent uses / requires a minimum restoring force of 70N</p>	
Material	Aluminium profile, cast aluminium, coated steel, brass, ABS	

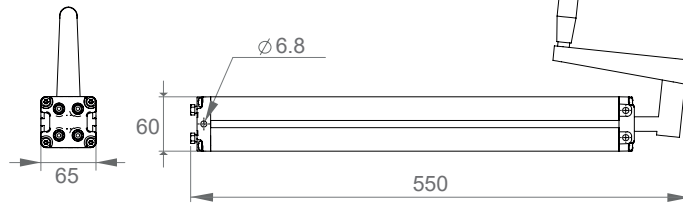
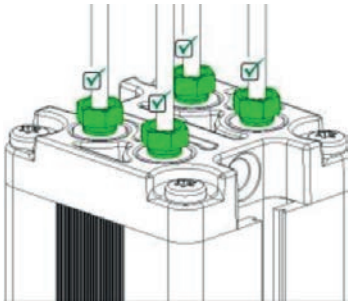
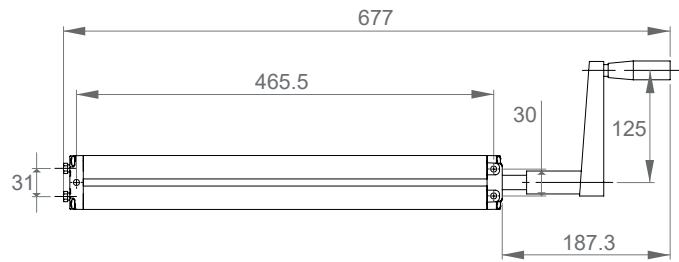
## COMPONENTS

1x Linear unit	
2x Corner triangle for assembly	
4x M5x8 zinc-plated countersunk screw	
2x M8x20 zinc-plated round socket head screw	
2x M8 zinc-plated spring nut	

(Several other configurations on demand, cylinder stroke, maximum load, etc.)



# Hydraulic pump with (crank) handle

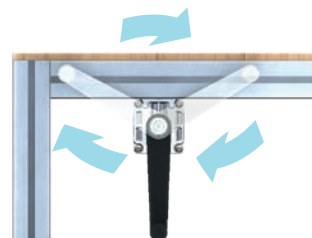


## SPECIFICATIONS

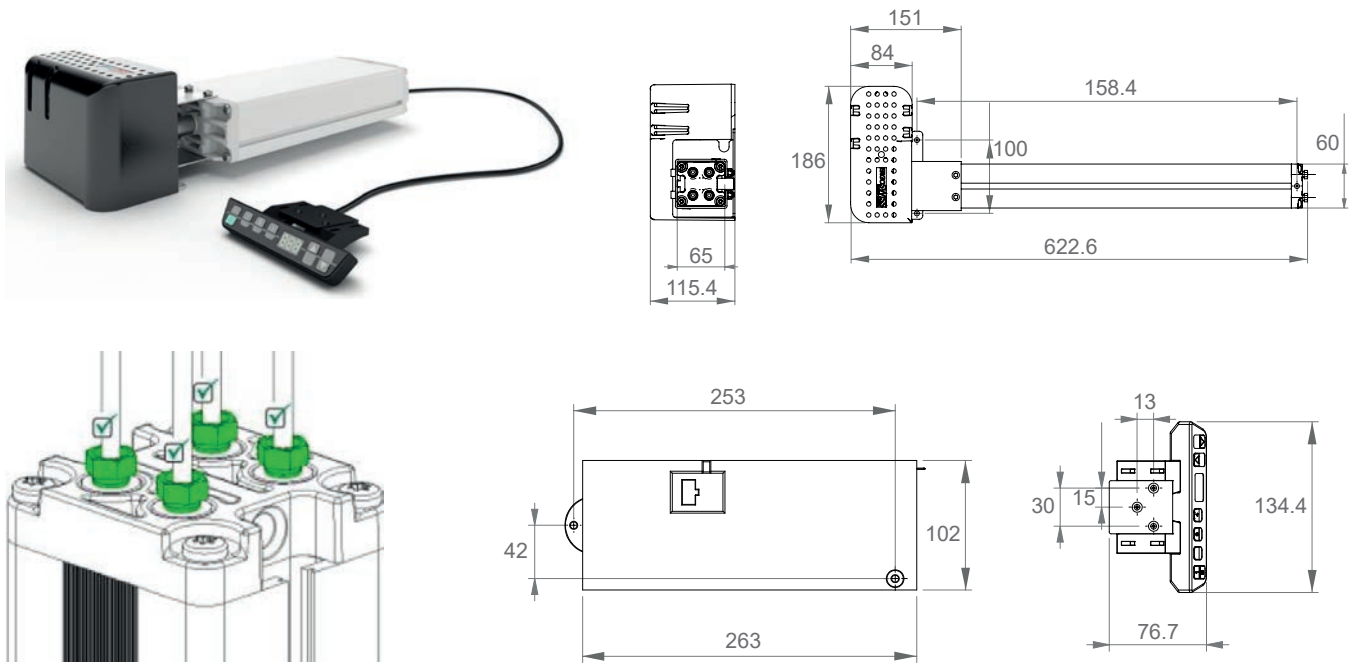
Reference	Hydraulic pump with (crank) handle (for hydraulic linear unit)	<b>ACC-N107400</b>
Description	<p>Maximum load 8000N                  For the actuation of 3 to 4 linear units (⚠ maximum load : 1500N per linear unit : ACC-N107700)                  Maximum rise speed 10mm per crank turn                  Pump pre-filled with oil                  Warning : not suitable for frequent uses (maximum 1 minute and ratio work / rest = 1/20)</p>	
Material	Aluminium profile, cast aluminium, coated steel, brass, ABS	

## COMPONENTS

1x Pump with retractable crank	
3x M6 zinc-plated spring nut	
1x M6x70 zinc-plated countersunk screw	
2x M6x80 zinc-plated countersunk screw	
1x Ball extraction magnet	



# Motorized hydraulic pump

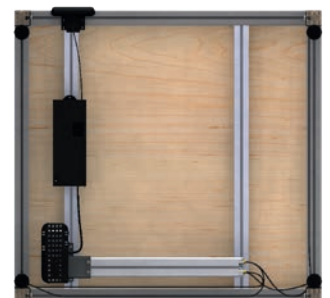
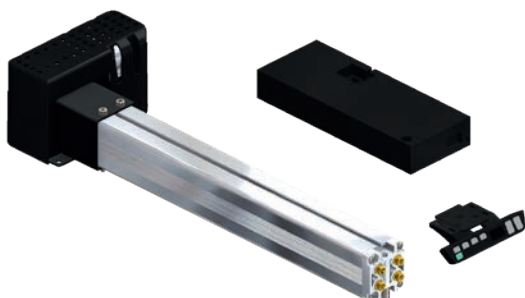


## SPECIFICATIONS

Reference	Motorized hydraulic pump (for hydraulic linear unit)	<b>ACC-N108400</b>
Description	<p>Maximum load 8000N                  For the actuation of 3 to 4 linear units (⚠ maximum load : 1500N per linear unit : ACC-N107700)                  Maximum rise speed 30mm/s                  Warning : not suitable for frequent uses (maximum 1 minute and ratio work / rest = 1/20)                  Pump pre-filled with oil                  Power supply : single-phase 230V</p>	
Material	Aluminium profile, cast aluminium, coated steel, brass, ABS	

## COMPONENTS

1x Pump + power supply unit + wired remote	
1x M6x80 zinc-plated countersunk screw	
3x M6 zinc-plated spring nut	
4x M4x16 zinc-plated low socket head screw	
4x M8 zinc-plated 13x13 nut	
2x M6x16 zinc-plated countersunk screw	
1x Ball extraction magnet	





# LMI Solutions Ltd

**Cale Lane Industrial Estate  
Aspull  
Wigan  
WN2 1HF**

**Email - [sales@lmi ltd.com](mailto:sales@lmi ltd.com)  
[www.lmisolutions.co.uk](http://www.lmisolutions.co.uk)**

**01942 820088**